

• **Priorities**

- Dental Sealants
- Adult Dental Care
- Access
- Medicaid
- Underserved
- Fluoride
- Education
- Opioid Diversion

MISSOURI
ORAL HEALTH
PLAN

<http://health.mo.gov/living/families/oralhealth/pdf/MissouriOralHealthPlan2015-2020.pdf>



ADULT DENTAL

- Nearly 25% of Missourians over 65 have had all of their teeth extracted; national average is 16.1%*
- 58.6% of Missouri adults visited a dentist in the last year; national average is 67%*
- 60,000 Non-emergent Dental Visits to Missouri ER - \$17 million in charges.

*2012 Missouri Burden Report

PROCESS FOR ADULT DENTAL CARE

- Dental Services planned after input from stakeholders, MPCA, MDA and others.
- State Medicaid Plan Amendment (SPA) filed with Centers for Medicare and Medicaid Services (CMS) January 6, 2016.
- MHD is working with CMS to approve the SPA.

Slide 5

w1 If this reference comes from the 2014 Missouri Burden Report, please place an asterick beside that reference at the bottom of the slide

woelkb9, 04/18/2016

w2 Add asterick if this is referenced above

woelkb9, 04/18/2016

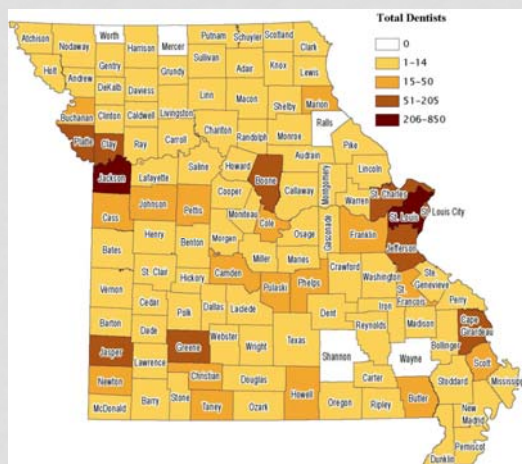
WHAT WE WILL PROVIDE

- Diagnostic services (exams, x-rays)
- Preventive services (cleanings)
- Periodontal services (deep scaling)
- Restorative services (fillings)
- Oral surgery (extractions and managing infections)
- Sedation
- Continued prior authorized services

ACCESS TO DENTAL SERVICES

- There are 5 counties without a dentist in Missouri
 - approximately 38,000 people live in those counties
- 90 counties are in Dental Health Professions Shortage Areas (DHPSA)
 - About 1.5 million Missourians (26% of the total population) live in a DHPSA.
- People with the highest risk have the worst access to dental services.

DENTIST DISTRIBUTION IN MISSOURI



MEDICAID ADULT DENTAL CARE

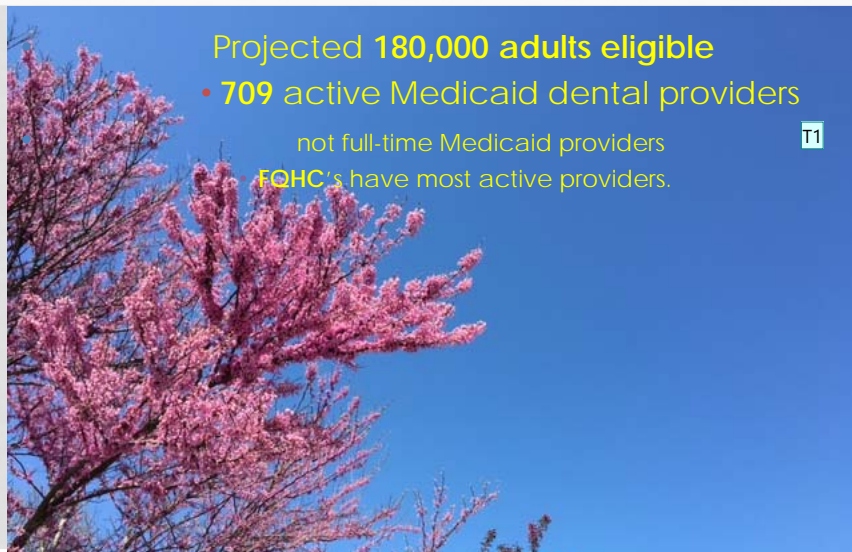
Projected **180,000** adults eligible

• **709** active Medicaid dental providers

not full-time Medicaid providers

FQHC's have most active providers.

T1



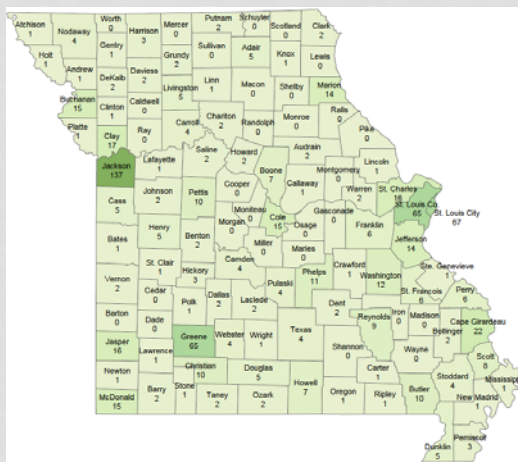
Slide 10

T1

We talk about prevalence of dentists in earlier slide. Not sure we need to repeat here.

TIDBAE4, 04/18/2016

MAP OF MEDICAID DENTAL PROVIDERS



MANAGING MEDICAID ADULT DENTAL SERVICES

- All Medicaid providers must be credentialed, a process that can take up to 120 days
- Missouri Foundation for Health recently funded 14 grants for new dental equipment that should increase volume by 7,500 patient visits.
- One FQHC has started a dental residency program that will increase visits by about 4,000 next year.

STRATEGIES TO INFORM PATIENTS

- Providers advertising adult dental benefits.
- FQHC's pre-screening adult patients already in their system.
- Information sent to case managers by the MO HealthNet Division.
- Word of mouth.

OUTCOMES

- Reduction in ER non-emergent dental visits
 - 2013: 56,741 visits with estimated \$17.5M spent.
- Improvement in certain chronic disease management by relieving pain and infection – primarily diabetes.
 - estimated \$2,800 reduction in annual medical charges ^{T2}
- Reduction in the number of opioid prescriptions given for dental pain.

Slide 15

T2 I assume this is on avg per participant?
TIDBAE4, 04/18/2016